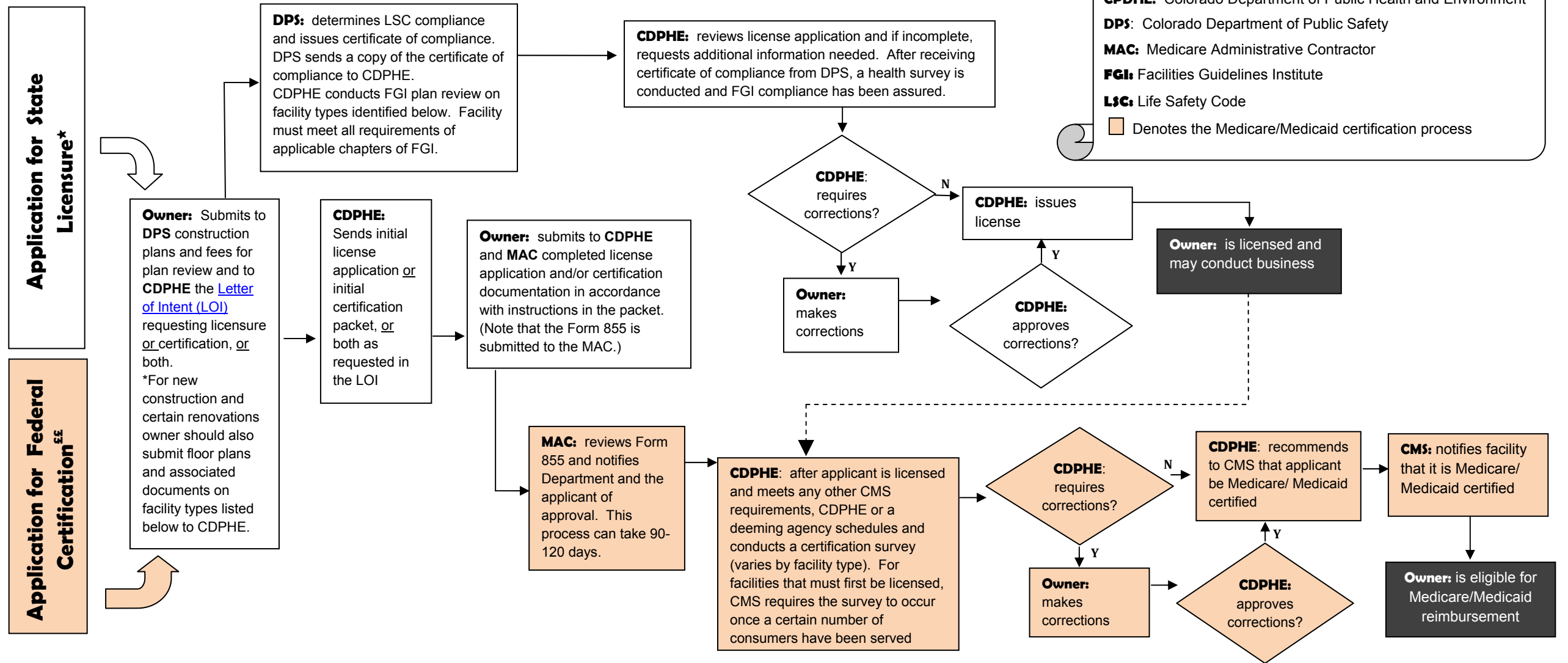


How to Get Licensed/Certified

This flowchart guides you through the initial licensure/certification process. Note that both licensure and certification are initiated by submitting a letter of intent.



^E The flowchart shows the certification process for facilities that are both Medicare and Medicaid certified. Assisted living residences (ALRs) and intermediate care facilities for the developmentally disabled (ICFDDs) are not subject to Medicare certification – they are Medicaid certified only. The process for these facilities is similar, but instead of working with the MAC or CMS, facilities must interface with the Colorado Department of Health Care Policy and Financing (HCPF).

^E Section 25-1.5-103 (5)(c), C.R.S., provides that CDPHE shall not issue or renew any license unless it has received from DPS a certificate of compliance certifying that the building or structure of the health facility are in conformance with DPS standards.

*Compliance with requirements of the Facilities Guidelines Institute (FGI) required as per 6 CCR-1011-1 for facilities related to [Chapters 4, 5, 8, 9, 10, 15, 18, 19, 20, 21, 22](#). Plans and associated documents must be submitted and approved prior to initial licensure being approved. Please request FGI guidance for further information or a list of associated documents. Submissions can be independent of the Letter of Intent. It is strongly recommended that documents be submitted as early as possible.